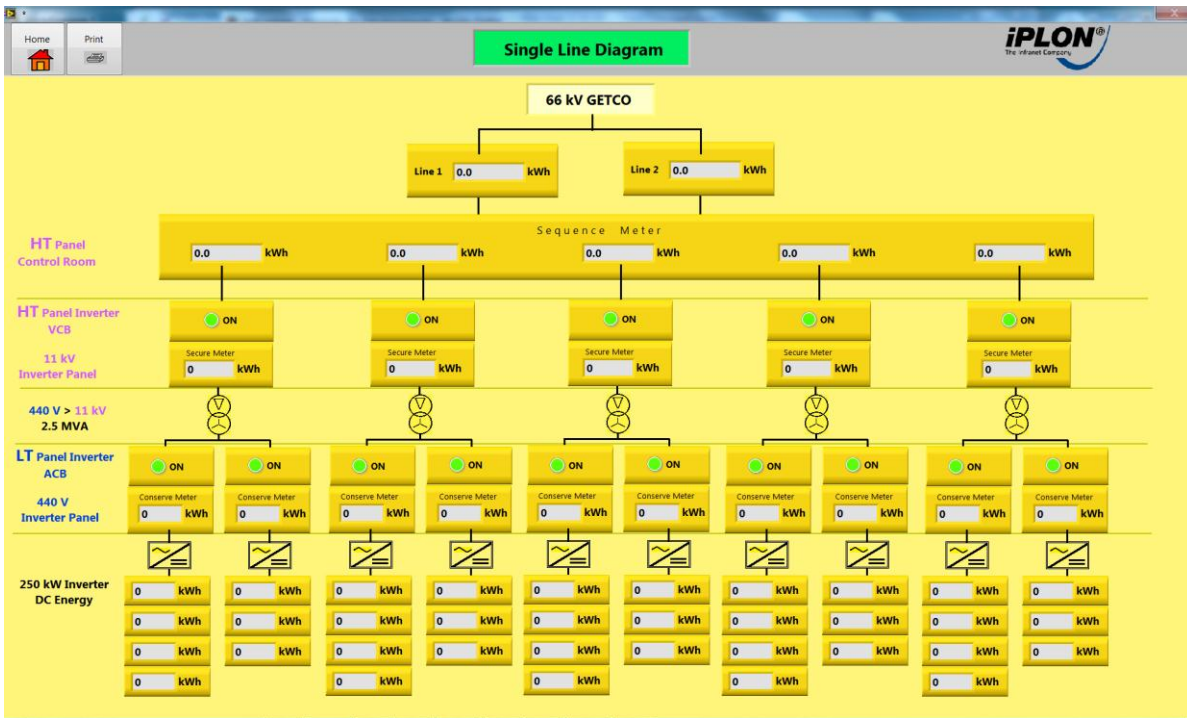


## Local & Remote SCADA (Premium) Environmental sensors + DC + AC + Grid 19800

### Overview

- Connection to Internet (DSL and/or UMTS)
- The Industry PC is connected to the intelligent Management Terminal (for monitoring of inverters, string monitoring and weather station monitoring)
- Touch Screen
- IP 55 Enclosure
- Safety lock prevents unauthorized access to control panel
- Optional features
  - Video connection (IP CCTV System)
  - Outputs for safety and security contacts





The Switchyard Overview screen displays the following status information:

11 KV MDRS O/G TO SOLAR TRANSFORMER		SOLAR TRANSFORMER [6.3MVA]		66 KV SWITCHYARD (LINE BAY)	
On/OFF	ON	OTI Alarm	ON	CB spring charged	ON
TRIP	OFF	WTI Alarm	OFF	SF6 Gas pressure	Normal
TCH	ON	BUCHOZ Alarm	ON	DC Supply	ON
L/R	ON	MOG Alarm	ON	TRIP Circuit	Healthy
		OTI TRIP	ON	86 Operated	ON
		WTI TRIP	OFF	ENERGY METER	0 kWh
		BUCHOZ TRIP	ON		<a href="#">Details</a>
Remote CLOSE		OSR TRIP	ON	Line breaker OPEN	
Remote OPEN				Line breaker CLOSE	

At the bottom of the screen, there are fields for Time, User, and Messages.

**Electrical Data**

Generator connection	
System voltage	230V AC
System current	1.7 A-AC
Power consumption	Nominal 65 W
Over voltage Protection AC	Yes
Fuses	
AC Input	2 A