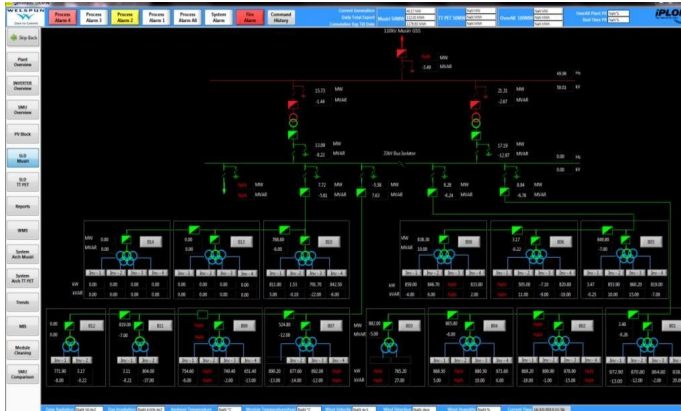


iPLON believes in the decentral philosophy & Renewable energy | iPLON is based on the IoT technology | iPLON is a fan of the Open Source community | iPLON is innovation | iPLON is passionate about operation & maintenance of renewable energy | iPLON supports smart cities and smarter villages | iPLON envisions a Post-carbon society..

Established in the year 2012, iPLON India has grown to become one of the biggest suppliers of O&M based Monitoring and Control systems in the Country

- *Commissioned 1000MW Monitoring & Control Systems in the Utility Scale segment*
- *Supplied iBox Rooftop Monitoring systems for 30 plants distributed all over the country*
- *RE2TN (Renewable Energy in Tamil Nadu): An initiative with the support of the German Government to build awareness on Grid Stability, O&M of Solar Plants and Multi-Utility Companies*
- *Main office in Chennai, Tamil Nadu with 40 young engineers*
- *O&M offices in Punjab, Rajasthan, Madhya Pradesh, Andhra Pradesh and Tamil Nadu*
- *Planned offices: Customer Support office in Delhi, O&M offices in Bihar, Karnataka, Uttarakhand and Maharashtra*

iPLON Products



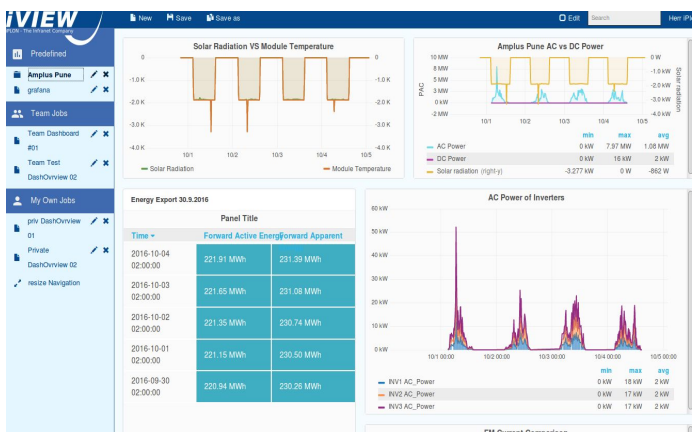
iPLON iSolar_Kontrol System

- Local server based SCADA System for Utility Scale Solar Plants
- DC and AC side monitoring
- Control and Interlock features
- Alarms configurable into various Priority levels
- iREP – Reporting Tool with User configurable reports
- Remote view for access from Customer Headoffice
- 750MW cumulative capacity under operation



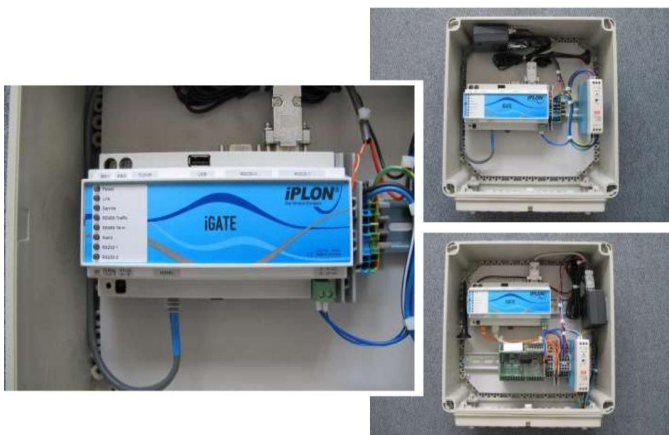
iPLON Web-portal Solution

- Hosting of data on iPLON Cloud servers
- Portal access from anywhere in world
- Multiple sites on a single platform
- Long term Data storage (10 – 20 years)
- For Solar rooftop and large scale utility plants



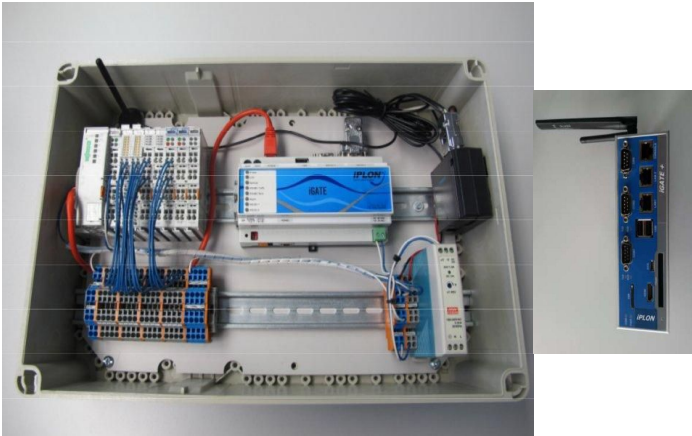
iDDC - iPLON Distributed Data-Center

- Centralized RE Asset Monitoring System
- Energy Management Center
- Data Analytics using 'R' Programming
- Forecasting generation of Solar & Wind Plants
- Benchmarking of plants
- Hosting of data on iPLON Cloud servers & migration to Customer Corporate servers
- Flexible interface: Easy dashboard creation



iPLON iBox

- Rooftop Monitoring System
- Inverter, Energy Meter, SMU and Weather sensors monitoring
- Zero Evacuation for plants without Net-meter
- Solar –DG Hybrid System
- Visualization on iPLONWeb- Portal



iPLON Magicbox

- Telemetry System on IEC 60850-5-101/104 platform
- Communication with State Load Despatch Center
- Control of Power Plant based on SLDC signals
- Power reduction and Power factor correction
- GPS Clock and Network Firewall



Weather Sensors

- Partnership with Lufft Systems for Utility Scale plants
- Mencke & Tegtmeyer Ingenieurburo sensors for rooftop plants
- RS485 output/ Analogue cards not required

Benefits of iPLON

System / Solution Level

- *Caring for the customer and helping to keep the Performance of the Plant high*
- *"Innovation" based O&M solution and not just SCADA Automation system*
- *Auxiliary Power consumption reduction (Control of Room Temperature, Lighting)*
- *Innovations for future: using Energy harvesting devices for String current measurement)/ Power line communications and RF based Inverter room to Inverter room communication*
- *Interfaces to Energy Reseller -> upcoming market*
- *Access to proven German Technology and Partners (iPLON's Network in the Smart Grid and RE Domain)*
- *As we are a small company, we are agile and results-oriented. We can quickly enter new markets and innovate to suit the requirements of the market. This is also because of our background in R&D*

